



for all creatures **great & small**

RSPCA Australia National Statistics 2010-2011

The RSPCA receives thousands of animals every year in every State and Territory in Australia. Annual statistics on the numbers of animals received, reclaimed or rehomed are compiled on a national basis by RSPCA Australia. The following statistics cover the 2010 to 2011 financial year and give details on the receipt and placement of animals by each state and territory RSPCA during that period. The statistics also include the number of cruelty complaints received by the RSPCA inspectorate and prosecutions undertaken.

Detailed information is provided in the following figures and tables:

Table 1 Animals received nationally by the RSPCA for the 2010-2011 financial year

Table 2 Comparison of animals received over the past 5 years

Table 3 Reasons for euthanasia of dogs and cats by each state and territory RSPCA

Table 4 Breakdown of animals received by each state and territory RSPCA

Table 5 Cruelty complaints and prosecutions by state/territory RSPCA

Table 6 National complaints, prosecutions and convictions over the past 5 years

Figure 1 Total numbers of animals received since 2000

Figure 2 Reasons for euthanasia of dogs and cats at RSPCA shelters in 2010-2011

Figure 3 Cruelty prosecutions by type of animal

Table 1: Animals received nationally by the RSPCA for the 2010-2011 financial year

	Number of animals	Percentage of total
Total animals received: 157,094		
Dogs		
Reclaimed	23,928	35.4% of total dogs
Rehomed	18,398	27.2% of total dogs
Currently in Care ¹	2,455	3.7% of total dogs
Transferred ²	2,746	4.1% of total dogs
Euthanased	19,583	29.0% of total dogs
Other	463	0.7% of total dogs
Total dogs	67,573	43.04% of total animals
Cats		
Reclaimed	2,386	3.7% of total cats
Rehomed	19,004	29.4% of total cats
Currently in Care ¹	2,969	4.6% of total cats
Transferred ²	2,014	3.1% of total cats
Euthanased	37,177	57.5% of total cats
Other	1,067	1.7% of total cats
Total cats	64,617	41.14% of total animals
Other animals[#]		
Reclaimed	2,300	1.8% of other animals
Rehomed	4,106	16.4% of other animals
Currently in Care ¹	964	3.9% of other animals
Transferred ²	3,449	13.8% of other animals
Euthanased	11,490	46.0% of other animals
Other	2,595	10.4% of other animals
Total other animals	24,904	15.83% of total animals

¹Currently in Care: animals remaining in shelter at end of financial year including foster care

²Transferred: animals transferred to non-RSPCA shelter or pound

[#]Including: horses, small animals, livestock, and wildlife

Table 2: Comparison of animals received over the past 5 years

	2006-07	2007-08	2008-09	2008-09	2010-11	Change from previous year
Dogs						
Reclaimed/rehomed /other	45,730	46,742	47,298	48,569	47,990	Down 1.19%
Euthanased	21,973	23,772	22,085	20,177	19,583	Down 2.94%
Total dogs	67,703	70,514	69,383	68,746	67,633	Down 1.71%
Cats						
Reclaimed/rehomed /other	25,137	26.303	26,710	27,075	27,440	Up 1.35%
Euthanased	33,343	42.731	39,495	38,642	37,177	Down 3.79%
Total cats	58,480	69,034	66,205	65,717	65,717	Down 1.67%
Other animals						
Reclaimed/rehomed /other	9,149	11,431	10,304	13,270	13,414	Up1.57%
Euthanased	9,089	11,015	10,729	11,337	11,490	Up 1.35%
Total other animals	18,238	22,446	21,033	24,544	24,904	Up1.47%
Total animals						
Total animals	144,421	161,994	156,621	159,007	157,094	Down 1.20%

Figure 1: Animals received since 2000

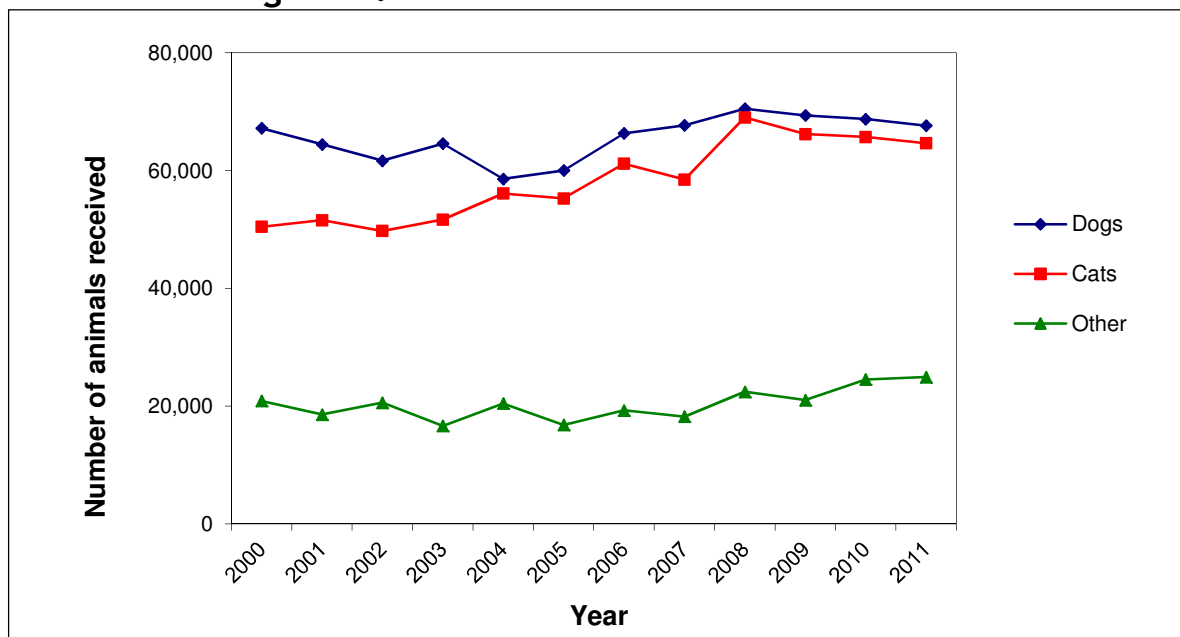
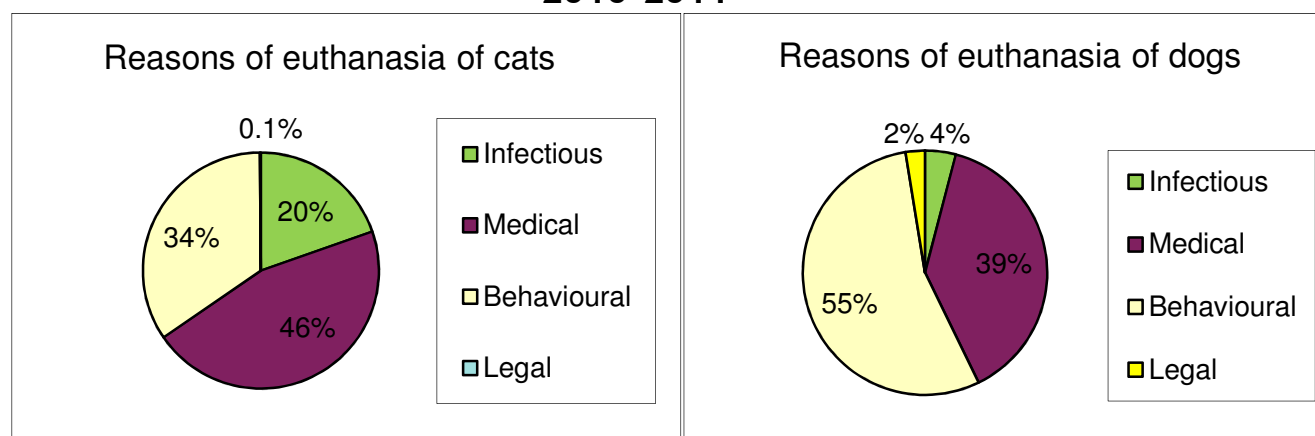


Table 3: Reasons for euthanasia of dogs and cats by each state and territory RSPCA

	State/Territory RSPCA								Total
	ACT	NSW	NT*	QLD	SA	TAS	VIC	WA	
Dogs									
Infectious	2	333	110	234	61	19	29	8	796
Medical reasons	66	3,399	83	2,111	426	49	1,360	89	7583
Behavioural Problems	37	4,238	32	4,223	514	171	1,302	185	10,702
Legal	0	239	0	50	11	0	202	0	502
Total dogs euthanased	105	8,209	225	6,618	1,012	239	2,893	282	19,583
Cats									
Infectious	376	2,307	116	1,628	713	596	1,501	66	7,303
Medical reasons	302	7,678	81	4811	1005	339	2,643	161	17,020
Behavioural Problems	574	3046	31	3,127	892	732	4348	49	12,799
Legal	0	0	0	0	20	0	35	0	55
Total cats euthanased	1,252	13,031	228	9,566	2,630	1,667	8,527	276	37,177

* Data not available for NT - data from Darwin Regional Branch only

Figure 2: Reasons for euthanasia of dogs and cats at RSPCA shelters in 2010-2011



Livestock									
Reclaimed	3	107	4	46	1	9	34	0	204
Rehomed	88	422	0	451	20	160	241	133	1515
Currently in Care ¹	13	234	0	62	2	15	16	11	353
Transferred ²	0	61	0	58	0	1	0	0	120
Euthanased	19	417	0	324	80	62	163	22	1087
Other	6	14	0	73	1	3	56	0	153
Total livestock	129	1255	4	1014	104	250	510	166	3432
Last year's total	99	1209	0	1032	522	206	706	90	3864
Percent change ³	30.30%	3.80%	0	-1.74%	-80.08%	21.36%	-27.76%	84.44%	-11.18%
Wildlife									
Released	894	39	0	827	25	13	41	1	1840
Currently in Care ¹	120	48	0	66	0	12	18	0	264
Transferred ²	31	301	0	1675	98	60	593	0	2758
Euthanased	1542	483	0	3986	186	103	730	3	7033
Other	653	308	0	848	10	22	212	2	2055
Total wildlife	3240	1179	0	7402	319	210	1594	6	13950
Last year's total	3346	1197	0	5835	869	292	1727	1	13267
Percent change ³	-3.17%	-1.50%	0	26.86%	-63.29%	-28.08%	-7.70%	500%	5.15%
Other animals									
Reclaimed	35	34	1	68	16	13	58	0	225
Rehomed	329	456	3	647	248	180	614	0	2500
Currently in Care ¹	37	15	0	91	8	55	88	0	297
Transferred ²	0	106	0	428	11	14	0	0	559
Euthanased	129	1472	13	426	382	42	873	0	3346
Other	46	85	0	87	14	68	84	0	387
Total other animals	576	2168	17	1747	679	372	1717	0	7314
Last year's total	719	2510	12	1667	578	317	1336	18	7157
Percent change ³	-19.9%	-13.6%	41.7%	4.8%	17.5%	17.4%	28.5%	-111.1%	2.2%

Total animals received	8611	46339	1395	45933	10769	5713	35651	2737	157094
Total 2009-10	8586	46640	1265	42438	14107	5545	37422	3004	159007
Percent change ⁴	0.29%	-0.65%	10.28%	8.24%	-23.66%	3.03%	-4.73%	-8.89%	-1.20%

¹Currently in Care: animals remaining in shelter at end of financial year including foster care

²Transferred: animals transferred to non-RSPCA shelter or pound

³Percentage change in 2010-11 from previous year's figures

Footnote to Table 4: Examples of livestock, wildlife and other animals received

Livestock

- Cattle
- Chickens
- Ducks
- Geese
- Goats
- Bantam Hens
- Pigs
- Roosters
- Sheep
- Donkey
- Turkey

Wildlife

- A wide variety of native birds
- Magpies
- Galahs
- Lizards
- Possums
- Kookaburras
- Water birds
- Turtles
- Koalas
- Kangaroos and Wallabies

Other animals

- Budgerigars
- Doves
- Ferrets
- Guinea pigs
- Mice
- Pigeons
- Rabbits
- Rats
- Tame ducks and chickens

Table 5: Cruelty complaints and prosecutions by State/Territory RSPCA

	State/Territory RSPCA*							Total
	ACT	NSW	QLD	SA	TAS	VIC	WA	
Cruelty complaints								
Investigated	1188	15011	13661	3035	3550	14121	3832	54398
Cruelty prosecutions								
Prosecutions	6	91	26	54	28	50	20	275
Convictions	4	50	10	68	6	50	20	208
Charges laid	12	514	100	0	101	175	21	923
People charged	4	91	31	60	33	50	20	289
Cases pending	6	39	16	18	22	39	9	149
Routine inspections	0	73	0	34	160	20	81	368

* No inspectorate in NT

Footnote to Table 5: Routine Inspection Details

Following are examples of the types of establishments routinely inspected by the RSPCA:

- Abattoirs
- Aquariums
- Breeding establishments
- Circuses
- Feedlots
- Guard dog firm
- Hobby farm
- Intensive farms
- Kennels
- Livestock vessels
- Markets
- Pet shops
- Poultry farms
- Pounds
- Riding schools
- Rodeos
- Saleyards
- Scientific establishments
- Shelters
- Shows
- Tourist parks
- Zoo

Table 6: National complaints, prosecutions and convictions over the past 5 years

	2005-06	2006-07	2007-08	2008-09	2009-10	2010-11
Complaints	38,913	41,915	49,494	50,765	53,544	59,916
Prosecutions	377	352	266	259	247	275
Convictions	254	236	253	202	185	208

Figure 3: Total RSPCA cruelty prosecutions by type of animal in 2010-2011

