



for all creatures **great & small**

RSPCA Australia National Statistics 2008-2009

The RSPCA receives thousands of animals every year in every State and Territory in Australia. Annual statistics on the numbers of animals received, reclaimed or rehomed are compiled on a national basis by RSPCA Australia. The following statistics cover the 2008 to 2009 financial year and give details on the receipt and placement of animals by each state and territory RSPCA during that period. The statistics also include the number of cruelty complaints received by the RSPCA inspectorate and prosecutions undertaken.

Detailed information is provided in the following figures and tables:

Table 1 Animals received nationally by the RSPCA for the 2008-2009 financial year

Table 2 Comparison of animals received over the past 5 years

Table 3 Reasons for euthanasia of dogs and cats by each state and territory RSPCA

Table 4 Breakdown of animals received by each state and territory RSPCA

Table 5 Cruelty complaints and prosecutions by state/territory RSPCA

Table 6 National complaints, prosecutions and convictions over the past 5 years

Figure 1 Total numbers of animals received since 2000

Figure 2 Reasons for euthanasia of dogs and cats at RSPCA shelters in 2008-2009

Figure 3 Cruelty prosecutions by type of animal

Table 1: Animals received nationally by the RSPCA for the 2008-2009 financial year

	Number of animals	Percentage of total
Total animals received: 156,621		
Dogs		
Reclaimed	22,896	33.0% of total dogs
Rehomed	19,236	27.7% of total dogs
In Stock	2,681	3.9% of total dogs
Transferred	1,853	2.7% of total dogs
Euthanased	22,085	31.8% of total dogs
Other*	632	0.9% of total dogs
Total dogs	69,383	44.30% of total animals
Cats		
Reclaimed	2,447	3.7% of total cats
Rehomed	19,666	29.7% of total cats
In Stock	2,484	3.8% of total cats
Transferred	1,480	2.2% of total cats
Euthanased	39,495	59.7% of total cats
Other*	633	1.0% of total cats
Total cats	66,205	42.27% of total animals
Other animals[#]		
Reclaimed	2,025	9.6% of other animals
Rehomed	3,599	17.1% of other animals
In Stock	784	3.7% of other animals
Transferred	1,827	8.7% of other animals
Euthanased	10,729	51.0% of other animals
Other*	2,069	9.8% of other animals
Total other animals	21,033	13.43% of total animals

*Including: dead on arrival, escaped, foster care or not specified

[#] Including: horses, small animals, livestock, and wildlife

Table 2: Comparison of animals received over the past 5 years

	2004-05	2005-06	2006-07	2007-08	2008-09	Change from previous year
Dogs						
Reclaimed/rehomed /other	39,372	44,790	45,730	46,742	47,298	Up 1.19%
Euthanased	20,658	21,554	21,973	23,772	22,085	Down 7.1%
Total dogs	60,030	66,344	67,703	70,514	69,383	Down 1.6%
Cats						
Reclaimed/rehomed /other	23,350	24,173	25,137	26.303	26.710	Up 1.55%
Euthanased	31,941	37,010	33,343	42.731	39.495	Down 7.57%
Total cats	55,291	61,183	58,480	69.034	66.205	Down 4.1%
Other animals						
Reclaimed/rehomed /other	8,105	9,768	9,149	11,431	10,304	Down 9.86%
Euthanased	8,733	9,626	9,089	11,015	10,729	Down 2.6%
Total other animals	16,838	19,394	18,238	22,446	21,033	Down 6.3%
Total animals	132,159	146,921	144,421	161,994	156,621	Down 3.32%

Figure 1: Animals received since 2000

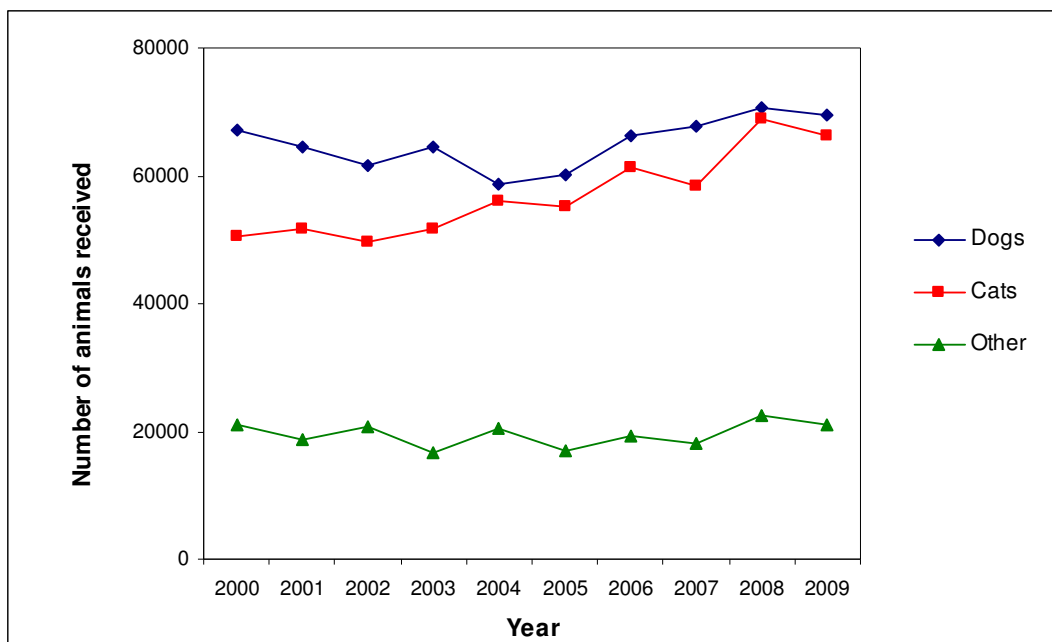


Table 3: Reasons for euthanasia of dogs and cats by each state and territory RSPCA

	State/Territory RSPCA								Total
	ACT	NSW	NT*	QLD	SA [#]	TAS	VIC	WA	
Dogs									
Medical reasons	45	2,815	207	2,062	124	63	1,793	71	7,180
Behavioural problems	91	4,559	57	3,823	658	237	1,804	177	11,406
No room for adoption	0	413	2	171	3	2	250	0	841
Other	0	1,499	0	822	223	3	111	0	2,658
Total dogs euthanased	136	9,286	266	6,878	1,008	305	3,958	248	22,085
Cats									
Medical reasons	541	4,410	118	3,598	1,689	995	3,989	65	15,405
Behavioural problems	204	2,993	54	3,530	874	723	4,773	34	13,185
No room for adoption	0	3,909	40	3,398	48	224	1,039	0	8,658
Feral cat	430	0		519	101	32	0	0	1,082
Other	0	1,165		0		0	0	0	1,165
Total cats euthanased	1,175	12,477	212	11,045	2,712	1,974	9,801	99	39,495

* Data not available for NT - data from Darwin Regional Branch only

[#]Figures only relate to animals euthanased at certain shelters across the state

Figure 2: Reasons for euthanasia of dogs and cats at RSPCA shelters in 2008-2009

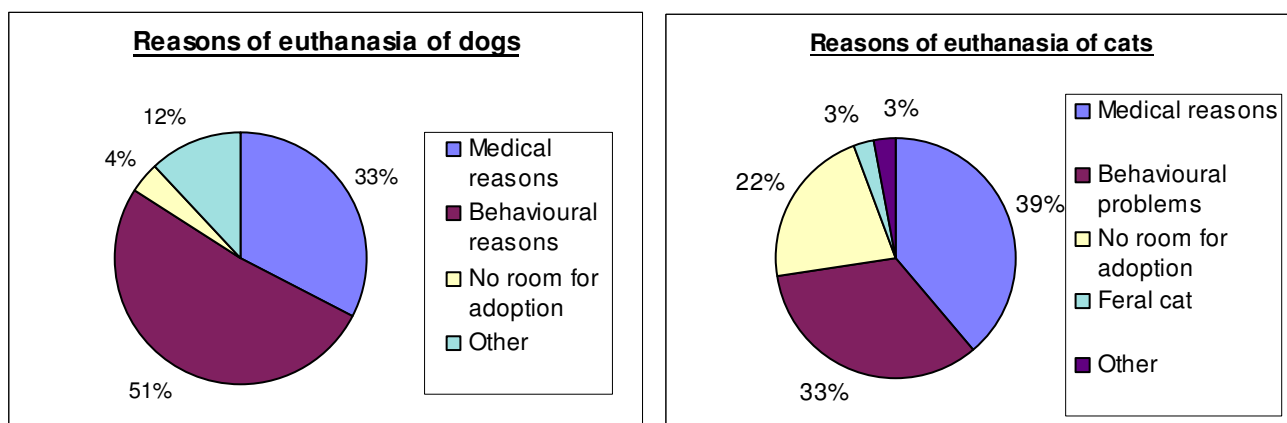


Table 4: Breakdown of animals received by each State and Territory RSPCA

	State/Territory RSPCA								Total
	ACT	NSW	Darwin	QLD	SA	TAS	VIC	WA	
Dogs									
Reclaimed	735	4,947	86	4,860	2,099	702	8,846	621	22,896
Rehomed	493	5,397	450	5,263	1,065	584	4,939	1,045	19,236
In stock ¹	70	1,145	57	756	140	73	312	128	2,681
Transferred ²	191	1,212	0	14	356	80	0	0	1,853
Euthanased	136	9,286	266	6,878	1,008	305	3,958	248	22,085
Other ³	3	391	2	1,175	0	0	61	0	632
Total dogs	1,628	22,378	861	17,946	4,668	1,744	18,116	2,042	69,383
Last year's total	1,546	22,676	1,287	17,257	5,270	1,545	19,087	1,846	70,514
Percent change ⁴	+5.30%	-1.31%	-33.10%	+3.99%	-11.42%	+12.88%	-5.09%	+10.62%	-1.60%
Cats									
Reclaimed	193	473	5	582	195	62	935	2	2,447
Rehomed	1,229	4,654	291	5,188	1,427	829	5,090	958	19,666
In stock	47	962	179	745	132	131	178	110	2,484
Transferred	0	690	0	41	4	129	616	0	1,480
Euthanased	1,175	12,477	212	11,045	2,712	1,974	9,801	99	39,495
Other	10	281	15	226	0	6	95	0	633
Total cats	2,654	19,537	702	17,827	4,470	3,131	16,715	1,169	66,205
Last year's total	2,909	19,871	1,217	18,090	6,231	2,112	17,870	734	69,034
Percent change ⁴	-8.77%	-1.68%	-42.32%	-1.45%	-28.26%	+48.25%	-6.46%	+59.26%	-4.10%
Horses									
Reclaimed	0	10	0	5	1	1	18	0	35
Rehomed	0	18	0	25	0	21	13	2	79
In stock	0	30	0	5	0	6	22	0	63
Transferred	0	0	0	0	0	0	0	0	0
Euthanased	0	9	0	9	4	3	9	0	34
Other	0	3	0	0	0	0	0	0	3
Total horses	0	70	0	44	5	31	62	2	214
Last year's total	0	58	0	52	6	19	52	9	196
Percent change ⁴	n/a	+20.69%	n/a	-15.38%	-16.67%	+63.16%	+19.23%	-77.78%	+9.18%
Livestock									
Reclaimed	4	24	0	54	8	7	38	1	136
Rehomed	60	281	0	466	33	161	177	38	1,216
In stock	8	199	0	39	1	9	18	3	277

Transferred	0	54	0	0	0	1	0	0	55
Euthanased	9	357	0	332	14	64	141	2	919
Other	2	22	0	31	0	2	3	0	60
Total livestock	83	937	0	922	56	244	377	44	2,663
Last year's total	70	695	14	1,153	97	109	436	48	2,622
Percent change ⁴	+18.57%	+34.82%	-100.0%	-20.03%	-42.27%	+123.85%	-13.53%	-8.33%	+1.56%
Wildlife									
Released	813	95	0	562	135	42	29	0	1,676
In stock	38	62	0	25	16	1	15	0	157
Transferred	17	181	0	596	119	70	758	0	1,741
Euthanased	1,580	452	0	3,021	134	77	1,054	0	6,318
Other	757	306	0	494	24	25	186	0	1,792
Total wildlife	3,205	1,096	0	4,698	428	215	2,042	0	11,684
Last year's total	3,785	1,351	0	4,527	1,243	234	2,279	0	13,419
Percent change ⁴	-15.35%	-18.87%	n/a	+3.78%	-65.57%	-8.12%	-10.40%	n/a	-12.93%
Other animals									
Reclaimed	15	34	0	74	5	25	25	0	178
Rehomed	343	395	6	909	185	120	299	47	2,304
In stock	30	35	0	174	7	11	29	0	287
Transferred	0	0	0	5	0	7	19	0	31
Euthanased	167	1,573	3	879	139	60	633	4	3,458
Other	15	94	0	113	0	7	18	0	214
Total other animals	570	2,098	9	2,158	336	230	1,020	51	6,472
Last year's total	602	1,907	26	1,566	363	100	1,632	27	6,209
Percent change ⁴	-5.3%	+10.0%	-65.38%	+37.8%	-7.4%	+130.0%	-37.50%	+88.9%	+4.2%
Total animals received									
Total animals received	8,140	46,116	1,572	43,595	9,963	5,595	38,332	3,308	156,621
Total 2007-08	8,912	46,558	2,530	42,645	13,210	4,119	41,356	2,664	161,994
Percent change ⁴	-8.66%	-0.95%	-37.87%	+2.23%	-24.58%	+35.83%	-7.31%	+24.17%	-3.32%

¹In stock: animals remaining in shelter at end of financial year

²Transferred: animals transferred to non-RSPCA shelter or pound

³Other: includes animals dead on arrival, escaped, or none of the above categories

⁴ Percentage change in 2008-09 from previous year's figures

Footnote to Table 4: Examples of livestock, wildlife and other animals received

Livestock

- Cattle
- Chickens
- Ducks
- Geese
- Goats
- Bantam Hens
- Pigs
- Roosters
- Sheep
- Donkey
- Turkey

Wildlife

- A wide variety of native birds
- Magpies
- Galahs
- Lizards
- Possums
- Kookaburras
- Water birds
- Turtles
- Koalas
- Kangaroos and Wallabies

Other animals

- Budgerigars
- Doves
- Ferrets
- Guinea pigs
- Mice
- Pigeons
- Rabbits
- Rats
- Tame ducks and chickens

Table 5: Cruelty complaints and prosecutions by State/Territory RSPCA

	State/Territory RSPCA*							Total
	ACT	NSW	QLD	SA	TAS	VIC	WA	
Cruelty complaints								
Investigated	912	13,683	11,724	2,894	2,678	14,455	4,419	50,765
Cruelty prosecutions								
Prosecutions	6	105	23	40	24	50	11	259
Convictions	1	70	20	40	18	47	6	202
Charges laid	6	491	528	0	38	743	21	1,827
People charged	6	105	23	44	28	49	12	267
Cases pending	4	35	3	23	4	0	3	72
Routine inspections	0	55	384	24	178	57	0	698

* No inspectorate in NT

Footnote to Table 5: Routine Inspection Details

Following are examples of the types of establishments routinely inspected by the RSPCA:

- Abattoirs
- Aquariums
- Breeding establishments
- Circuses
- Feedlots
- Guard dog firm
- Hobby farm
- Intensive farms
- Kennels
- Livestock vessels
- Markets
- Pet shops
- Poultry farms
- Pounds
- Riding schools
- Rodeos
- Saleyards
- Scientific establishments
- Shelters
- Shows
- Tourist parks
- Zoo

Table 6: National complaints, prosecutions and convictions over the past 5 years

	2003-04	2004-05	2005-06	2006-07	2007-08	2008-09
Complaints	44,035	42,389	38,913	41,915	49,494	50,765
Prosecutions	320	339	377	352	266	259
Convictions	155	165	254	236	253	202

Figure 3: Total RSPCA cruelty prosecutions by type of animal in 2008-2009

