



for all creatures **great & small**

RSPCA Australia National Statistics 2009-2010

The RSPCA receives thousands of animals every year in every State and Territory in Australia. Annual statistics on the numbers of animals received, reclaimed or rehomed are compiled on a national basis by RSPCA Australia. The following statistics cover the 2009 to 2010 financial year and give details on the receipt and placement of animals by each state and territory RSPCA during that period. The statistics also include the number of cruelty complaints received by the RSPCA inspectorate and prosecutions undertaken.

Detailed information is provided in the following figures and tables:

Table 1 Animals received nationally by the RSPCA for the 2009-2010 financial year

Table 2 Comparison of animals received over the past 5 years

Table 3 Reasons for euthanasia of dogs and cats by each state and territory RSPCA

Table 4 Breakdown of animals received by each state and territory RSPCA

Table 5 Cruelty complaints and prosecutions by state/territory RSPCA

Table 6 National complaints, prosecutions and convictions over the past 5 years

Figure 1 Total numbers of animals received since 2000

Figure 2 Reasons for euthanasia of dogs and cats at RSPCA shelters in 2009-2010

Figure 3 Cruelty prosecutions by type of animal

Table 1: Animals received nationally by the RSPCA for the 2009-2010 financial year

	Number of animals	Percentage of total
Total animals received: 159,007		
Dogs		
Reclaimed	24,223	35.2% of total dogs
Rehomed	19,007	27.6% of total dogs
In our care	2,840	4.1% of total dogs
Transferred	1,570	2.3% of total dogs
Euthanased	20,177	29.4% of total dogs
Other*	929	1.4% of total dogs
Total dogs	68,746	43.23% of total animals
Cats		
Reclaimed	2,451	3.7% of total cats
Rehomed	19,443	29.6% of total cats
In our care	2,655	4.0% of total cats
Transferred	1,745	2.7% of total cats
Euthanased	38,642	58.8% of total cats
Other*	781	1.4% of total cats
Total cats	65,717	41.33% of total animals
Other animals[#]		
Reclaimed	3,407	13.9% of other animals
Rehomed	4,732	19.3% of other animals
In our care	837	3.4% of other animals
Transferred	1,565	6.4% of other animals
Euthanased	11,337	46.2% of other animals
Other*	2,590	10.6% of other animals
Total other animals	24,544	15.44% of total animals

*Including: dead on arrival, escaped, foster care or not specified

[#] Including: horses, small animals, livestock, and wildlife

Table 2: Comparison of animals received over the past 5 years

	2005-06	2006-07	2007-08	2008-09	2009-10	Change from previous year
Dogs						
Reclaimed/rehomed /other	44,790	45,730	46,742	47,298	48,569	Up 2.69%
Euthanased	21,554	21,973	23,772	22,085	20,177	Down 8.64%
Total dogs	66,344	67,703	70,514	69,383	68,746	Down 0.92%
Cats						
Reclaimed/rehomed /other	24,173	25,137	26,303	26,710	27,075	Up 1.37%
Euthanased	37,010	33,343	42,731	39,495	38,642	Down 2.16%
Total cats	61,183	58,480	69,034	66,205	65,717	Down 0.74%
Other animals						
Reclaimed/rehomed /other	9,768	9,149	11,431	10,304	13,270	Up 28.17%
Euthanased	9,626	9,089	11,015	10,729	11,337	Up 5.67%
Total other animals	19,394	18,238	22,446	21,033	24,544	Up 16.69%
Total animals	146,921	144,421	161,994	156,621	159,007	Up 1.52%

Figure 1: Animals received since 2000

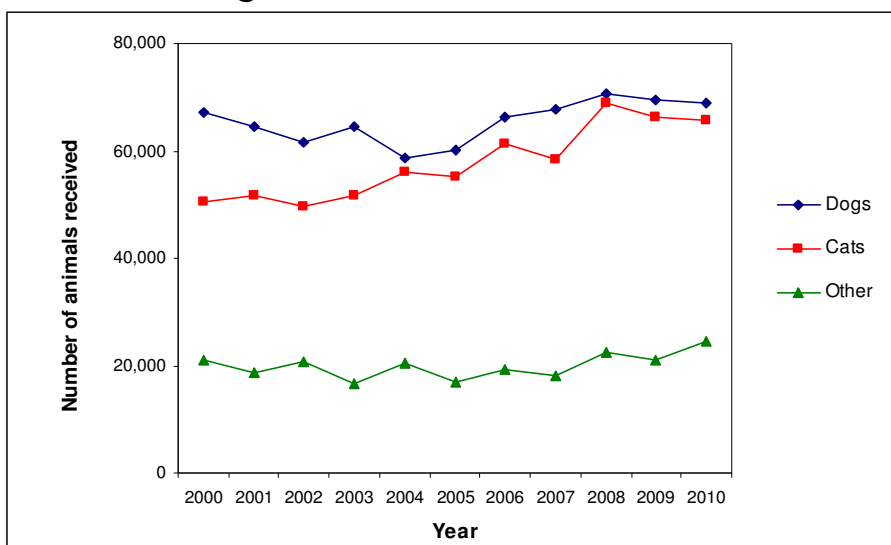


Table 3: Reasons for euthanasia of dogs and cats by each state and territory RSPCA

	State/Territory RSPCA								Total
	ACT	NSW	NT*	QLD	SA [#]	TAS	VIC	WA	
Dogs									
Medical reasons	47	2,627	104	2,197	609	111	1,442	71	7,208
Behavioural problems	51	4,365	34	3,602	528	250	1,792	162	10,784
No room for adoption	0	242	2	165	2	1	0	0	410
Other	0	1,127	0	490	94	1	63	0	1,775
Total dogs euthanased	98	8,361	138	6,454	1,233	363	3,297	233	20,177
Cats									
Medical reasons	606	4,952	152	3,874	2,609	959	4,981	118	18,251
Behavioural problems	527	2,994	24	3,114	1,384	699	3,991	31	12,764
No room for adoption	0	1,360	1	2,000	35	24	0	0	3,420
Other	0	3,778	0	315	0	0	114	0	4,207
Total cats euthanased	1,133	13,084	177	9,303	4,028	1,682	9,086	149	38,642

* Data not available for NT - data from Darwin Regional Branch only

[#]Figures only relate to animals euthanased at certain shelters across the state

Figure 2: Reasons for euthanasia of dogs and cats at RSPCA shelters in 2009-2010

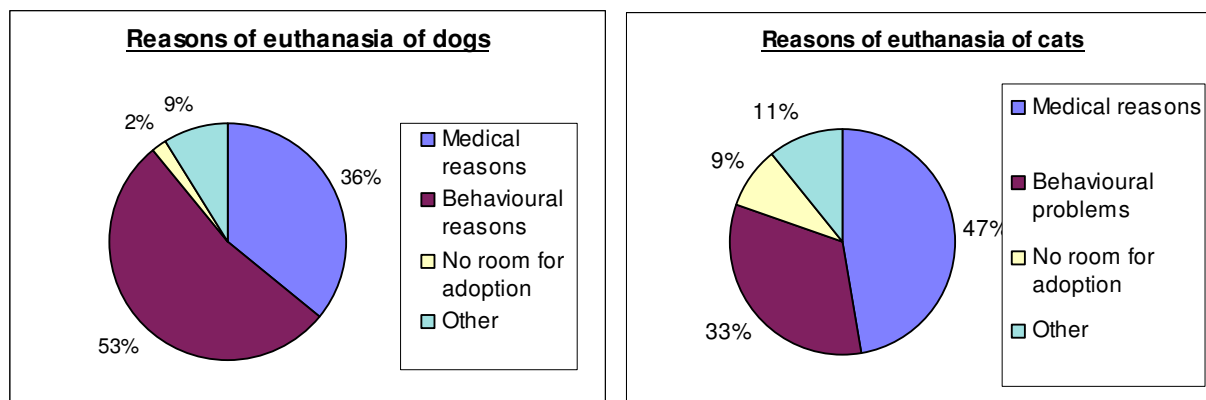


Table 4: Breakdown of animals received by each State and Territory RSPCA

	State/Territory RSPCA								Total
	ACT	NSW	Darwin	QLD	SA	TAS	VIC	WA	
Dogs									
Reclaimed	757	5,307	79	5,103	2,346	677	9,399	555	24,223
Rehomed	477	5,298	369	5,440	1,440	546	4,609	828	19,007
In our care ¹	65	1,386	46	644	171	88	330	110	2,840
Transferred ²	255	709	0	166	361	77	2	0	1,570
Euthanased	98	8,361	138	6,454	1,233	363	3,297	233	20,177
Other ³	18	267	0	233	289	26	96	0	929
Total dogs	1,670	21,328	632	18,040	5,840	1,777	17,733	1,726	68,746
Last year's total	1628	22,378	861	17,946	4,668	1,744	18,116	2,042	69,383
Percent change ⁴	+2.58%	-4.69%	-26.60%	+0.52%	+25.11%	+1.89%	-2.11%	-15.48%	-0.92%
Cats									
Reclaimed	191	484	21	550	222	64	919	0	2,451
Rehomed	1,235	4,668	356	4,764	1,674	912	4,899	935	19,443
In our care	139	1,142	55	708	120	172	250	69	2,655
Transferred	0	740	0	228	13	60	704	0	1,745
Euthanased	1,133	13,084	177	9,303	4,028	1,682	9,086	149	38,642
Other	50	185	12	249	239	26	17	0	781
Total cats	2,748	20,303	621	15,802	6,296	2,919	15,875	1,153	65,717
Last year's total	2,654	19,537	702	17,827	4,470	3,131	16,715	1,169	66,205
Percent change ⁴	+3.54%	+3.92%	-11.54%	-11.36%	+40.85%	-6.77%	-5.03%	-1.37%	-0.74%
Horses									
Reclaimed	0	20	0	13	0	1	14	0	48
Rehomed	2	37	0	20	1	23	22	7	112
In our care	1	22	0	10	1	9	6	5	54
Transferred	0	0	0	14	0	0	0	0	14
Euthanased	1	14	0	4	0	1	3	4	27
Other	0	0	0	1	0	0	0	0	1
Total horses	4	93	0	62	2	34	45	16	256
Last year's total	0	70	0	44	5	31	62	2	214
Percent change ⁴	+100.00%	+32.86%	n/a	+40.91%	-60.00%	+9.68%	-27.42%	+700.00%	+19.63%
Livestock									
Reclaimed	2	119	0	41	14	10	155	0	341
Rehomed	66	431	0	446	462	85	347	86	1,923
In our care	24	220	0	70	3	55	14	0	386

Transferred	0	5	0	31	0	0	0	0	36
Euthanased	7	419	0	395	43	49	147	4	1,064
Other	0	15	0	49	0	7	43	0	114
Total livestock	99	1,209	0	1,032	522	206	706	90	3,864
Last year's total	83	937	0	922	56	244	377	44	2,663
Percent change ⁴	+19.28%	+29.03%	n/a	+11.93%	+832.14%	-15.57%	+87.27%	+104.55%	+45.10%
Wildlife									
Released	1,180	48	0	1360	164	24	9	0	2,785
In our care	107	48	0	21	3	0	6	0	185
Transferred	3	303	0	111	146	46	688	0	1,294
Euthanased	1,241	485	0	3,769	450	178	806	1	6,930
Other	815	313	0	574	109	44	218	0	2,073
Total wildlife	3,346	1,197	0	5,835	869	292	1,727	1	13,267
Last year's total	3,205	1,096	0	4,698	428	215	2,042	0	11,684
Percent change ⁴	+4.40%	+9.22%	n/a	+24.2%	+103.04%	+35.81%	-15.43%	+100.0%	+13.55%
Other animals									
Reclaimed	23	44	4	70	19	14	59	0	233
Rehomed	436	596	4	759	316	191	411	44	2,697
In our care	45	22	1	50	16	25	53	0	212
Transferred	0	38	0	158	56	45	0	0	297
Euthanased	181	1,722	3	516	171	30	686	7	3,316
Other	34	115	0	114	0	12	127	0	402
Total other animals	719	2,510	12	1,667	578	317	1,336	18	7,157
Last year's total	570	2,098	9	2,158	336	230	1,020	51	6,472
Percent change ⁴	+26.1%	+19.6%	+33.3%	-22.8%	+72.0%	+37.8%	+31.0%	-67.4%	+10.6%
Total animals received									
Total animals received	8,586	46,640	1,265	42,438	14,107	5,545	37,422	3,004	159,007
Total 2008-09	8,140	46,116	1,572	43,595	9,963	5,595	38,332	3,308	156,621
Percent change ⁴	+5.48%	+1.14%	-19.53%	-2.65%	+41.59%	-0.89%	-2.37%	-9.19%	+1.52%

¹In our care: animals remaining in shelter at end of financial year

²Transferred: animals transferred to non-RSPCA shelter or pound

³Other: includes animals dead on arrival, escaped, or none of the above categories

⁴Percentage change in 2009-10 from previous year's figures

Footnote to Table 4: Examples of livestock, wildlife and other animals received

Livestock

- Cattle
- Chickens
- Ducks
- Geese
- Goats
- Bantam Hens
- Pigs
- Roosters
- Sheep
- Donkey
- Turkey

Wildlife

- A wide variety of native birds
- Magpies
- Galahs
- Lizards
- Possums
- Kookaburras
- Water birds
- Turtles
- Koalas
- Kangaroos and Wallabies

Other animals

- Budgerigars
- Doves
- Ferrets
- Guinea pigs
- Mice
- Pigeons
- Rabbits
- Rats
- Tame ducks and chickens

Table 5: Cruelty complaints and prosecutions by State/Territory RSPCA

	State/Territory RSPCA*							Total
	ACT	NSW	QLD	SA	TAS	VIC	WA	
Cruelty complaints								
Investigated	977	15,083	13,191	2,960	3,691	14,263	3,379	53,544
Cruelty prosecutions								
Prosecutions	3	101	26	32	15	54	16	247
Convictions	2	66	18	30	5	54	10	185
Charges laid	6	607	68	0	34	279	20	1,014
People charged	4	101	23	33	20	54	18	253
Cases pending	3	33	14	18	9	17	6	100
Routine inspections	0	60	343	9	142	35	114	703

* No inspectorate in NT

Footnote to Table 5: Routine Inspection Details

Following are examples of the types of establishments routinely inspected by the RSPCA:

- Abattoirs
- Aquariums
- Breeding establishments
- Circuses
- Feedlots
- Guard dog firm
- Hobby farm
- Intensive farms
- Kennels
- Livestock vessels
- Markets
- Pet shops
- Poultry farms
- Pounds
- Riding schools
- Rodeos
- Saleyards
- Scientific establishments
- Shelters
- Shows
- Tourist parks
- Zoo

Table 6: National complaints, prosecutions and convictions over the past 5 years

	2004-05	2005-06	2006-07	2007-08	2008-09	2009-10
Complaints	42,389	38,913	41,915	49,494	50,765	53,544
Prosecutions	339	377	352	266	259	247
Convictions	165	254	236	253	202	184

Figure 3: Total RSPCA cruelty prosecutions by type of animal in 2009-2010

