



for all creatures **great & small**

RSPCA Australia National Statistics 2011-2012

The RSPCA receives thousands of animals every year in every State and Territory in Australia. Annual statistics on the numbers of animals received, reclaimed or rehomed are compiled on a national basis by RSPCA Australia. The following statistics cover the 2011 to 2012 financial year and give details on the receipt and placement of animals by each state and territory RSPCA during that period. The statistics also include the number of cruelty complaints received by the RSPCA inspectorate and prosecutions undertaken.

Detailed information is provided in the following figures and tables:

Table 1 Animals received nationally by the RSPCA for the 2011-2012 financial year

Table 2 Comparison of animals received over the past 5 years

Table 3 Reasons for euthanasia of dogs and cats by each state and territory RSPCA

Table 4 Breakdown of animals received by each state and territory RSPCA

Table 5 Cruelty complaints and prosecutions by state/territory RSPCA

Table 6 National complaints, prosecutions and convictions over the past 5 years

Figure 1 Total numbers of animals received since 2001

Figure 2 Reasons for euthanasia of dogs and cats at RSPCA shelters in 2011-2012

Figure 3 Cruelty prosecutions by type of animal

Table 1: Animals received nationally by the RSPCA for the 2011-2012 financial year

	Number of animals	Percentage of total
Total animals received: 131,525		
Dogs		
Reclaimed	18,616	33.5% of total dogs
Rehomed	17,975	32.4% of total dogs
Currently in Care ¹	2,287	4.1% of total dogs
Transferred ²	2,042	3.7% of total dogs
Euthanased	14,211	25.6% of total dogs
Other	432	0.8% of total dogs
Total dogs	55,563	42.25% of total animals
Cats		
Reclaimed	2,166	4.1% of total cats
Rehomed	20,489	39.1% of total cats
Currently in Care ¹	2,996	5.7% of total cats
Transferred ²	1,419	2.7% of total cats
Euthanased	24,651	47.1% of total cats
Other	616	1.1% of total cats
Total cats	52,337	39.79% of total animals
Other animals[#]		
Reclaimed	2,256	9.5% of other animals
Rehomed	4,144	17.5% of other animals
Currently in Care ¹	1,087	4.6% of other animals
Transferred ²	3,621	15.3% of other animals
Euthanased	10,826	45.8% of other animals
Other	1,691	7.1% of other animals
Total other animals	23,625	17.96% of total animals

¹Currently in Care: animals remaining in shelter at end of financial year including foster care

²Transferred: animals transferred to non-RSPCA shelter or pound

[#] Including: horses, small animals, livestock, and wildlife

Table 2: Comparison of animals received over the past 5 years

	2007-08	2008-09	2009-10	2010-11	2011-2012	Change from previous year
Dogs						
Reclaimed/rehomed /other	46,742	47,298	48,569	47,990	41,352	Down 13.83%
Euthanased	23,772	22,085	20,177	19,583	14,211	Down 27.43%
Total dogs	70,514	69,383	68,746	67,633	55,563	Down 17.77%
Cats						
Reclaimed/rehomed /other	26,303	26,710	27,075	27,440	27,686	Up .90%
Euthanased	42,731	39,495	38,642	37,177	24,651	Down 33.69%
Total cats	69,034	66,205	65,717	64,617	52,337	Down 19.00%
Other Animals						
Reclaimed/rehomed /other	11,431	10,304	13,207	13,414	12,799	Down 4.58%
Euthanased	11,015	10,729	11,337	11,490	10,826	Down 5.78%
Total other animals	22,446	21,033	24,544	24,904	23,625	Down 5.14%
Total animals	161,994	156,621	159,007	157,094	131,525	Down 16.28%

Figure 1: Animals received since 2001

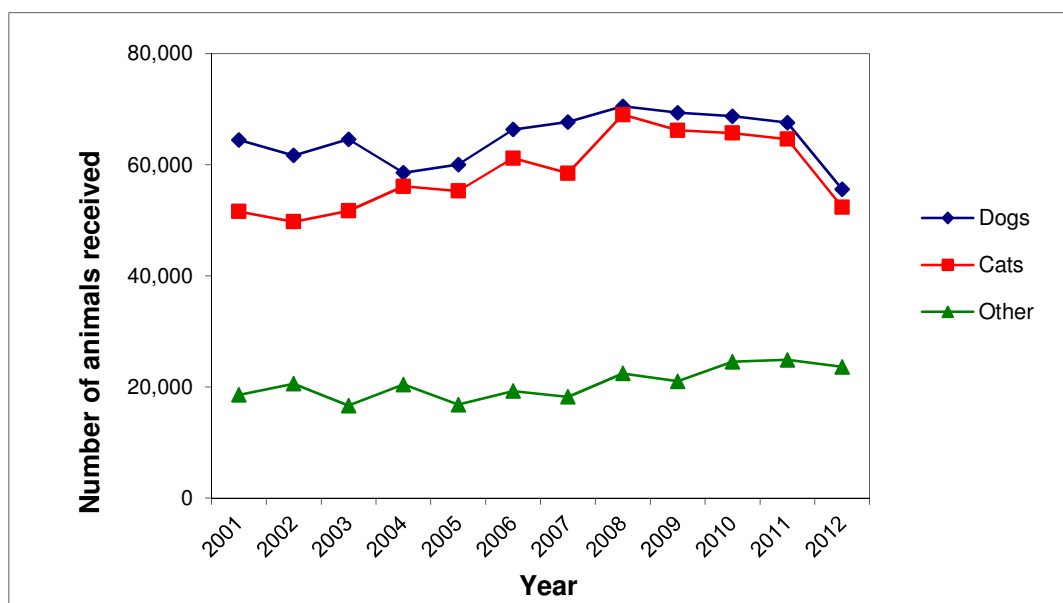


Table 3: Reasons for euthanasia of dogs and cats by each state and territory RSPCA

	State/Territory RSPCA								Total
	ACT	NSW [^]	NT*	QLD	SA	TAS	VIC	WA	
Dogs									
Infectious	2	269	53	285	159	8	30	8	814
Medical reasons	59	1418	56	1,045	85	55	677	164	3,559
Behavioural Problems	56	3,013	40	3,298	593	262	1,336	136	8,734
Legal	0	67	0	114	4	0	242	0	427
Other	0	95	1	500	58	2	21	0	677
Total dogs euthanased	117	4,862	150	5,242	899	327	2,306	308	14,211
Cats									
Infectious	129	2,707	69	1,047	707	245	1,201	72	6,177
Medical reasons	188	3,402	24	887	326	147	652	130	5,756
Behavioural Problems	497	2,898	77	2,375	991	598	2,167	34	9,637
Legal	0	0	0	0	68	0	1	0	69

Other	8	524	18	1,375	33	123	931	0	3,012
Total cats euthanased	822	9,531	188	5,684	2,125	1,113	4,952	236	24,651

* Data not available for NT - data from Darwin Regional Branch only

Figure 2: Reasons for euthanasia of dogs and cats at RSPCA shelters in 2011-2012

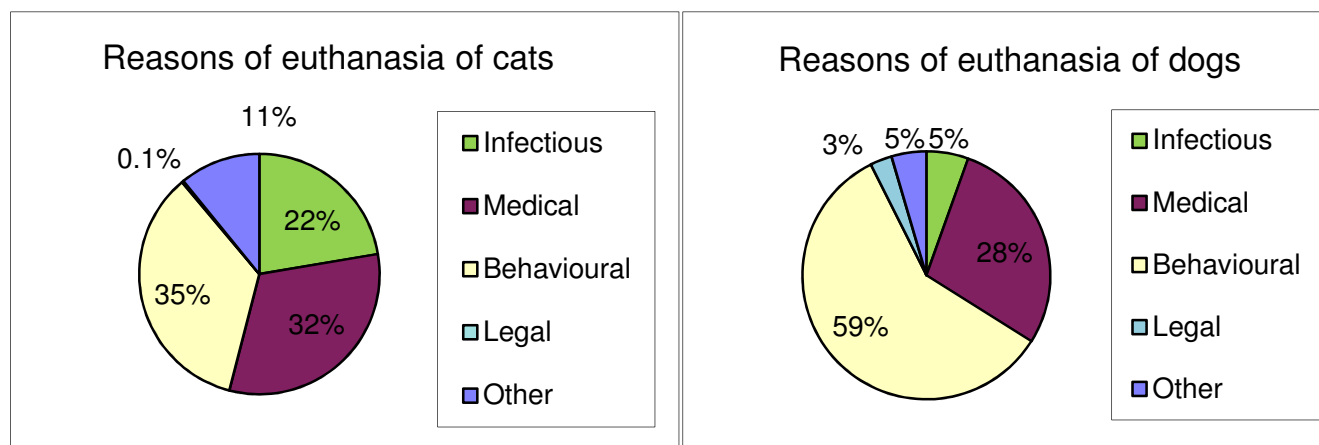


Table 4: Breakdown of animals received by each State and Territory RSPCA

	State/Territory RSPCA								Total
	ACT	NSW [^]	Darwin	QLD	SA	TAS	VIC	WA	
Dogs									
Reclaimed	967	896	141	5132	2044	666	8,204	566	18,616
Rehomed	358	4,921	376	5988	946	681	4,249	456	17,975
Currently in Care ¹	100	633	50	746	30	102	525	101	2287
Transferred ²	245	609	0	802	323	56	7	0	2042
Euthanased	117	4,862	150	5242	899	327	2,306	308	14211
Other	20	68	4	118	42	8	169	3	432
Total dogs	1807	11,989	721	18,028	4,284	1,840	15,460	1,434	55563
Last year's total	1751	20959	740	19252	4760	1690	16872	1549	67573
Percent change ³	3.20%	-42.80%	-2.57%	-6.36%	-10.00%	8.88%	-8.37%	-7.42%	-17.77%
Cats									
Reclaimed	226	243	16	580	125	69	898	9	2166

Rehomed	1243	4589	289	6191	1441	1390	4900	446	20489
Currently in Care ¹	71	1241	115	767	62	190	515	35	2996
Transferred ²	0	731	0	174	105	44	365	0	1419
Euthanased	822	9531	188	5684	2125	1113	4952	236	24651
Other	38	74	19	204	84	33	152	12	616
Total cats	2400	16409	627	13600	3942	2839	11782	738	52337
Last year's total	2856	20703	634	16455	4906	3168	14885	1001	64617
Percent change ³	-16.23%	-20.74%	-1.10%	-17.35%	-19.65%	-10.39%	-20.85%	-26.27%	-19.00%
Horses									
Reclaimed	0	7	0	22	0	0	0	0	29
Rehomed	1	31	0	19	4	8	10	2	75
Currently in Care ¹	0	51	0	12	0	5	13	4	85
Transferred ²	0	0	0	8	0	0	0	0	8
Euthanased	1	10	0	2	3	2	13	2	33
Other ³	0	0	0	0	2	0	0	0	2
Total horses	2	99	0	63	9	15	36	8	232
Last year's total	2	75	0	63	1	23	29	15	208
Percent change ³	0	32.00%	0	0	90.00%	-34.78%	24.14%	-46.67%	11.54%
Livestock									
Reclaimed	6	11	1	15	3	11	21	0	68
Rehomed	92	478	0	385	6	94	158	38	1251
Currently in Care ¹	9	289	0	42	0	21	38	6	405
Transferred ²	0	10	0	112	0	2	2	0	126
Euthanased	24	369	0	318	3	63	138	13	928
Other	1	8	0	43	2	2	10	2	68
Total livestock	132	1165	1	915	14	193	367	59	2846
Last year's total	129	1255	4	1014	104	250	510	166	3432
Percent change ³	2.33%	-7.17%	-75.00%	-9.76%	-86.54%	-22.80%	-28.04%	-64.46%	-17.07%
Wildlife									
Released	697	49	0	1029	44	26	69	0	1914
Currently in Care ¹	89	114	0	33	29	1	9	0	275
Transferred ²	24	255	0	2345	17	50	567	0	3258
Euthanased	1612	349	1	4428	45	69	787	0	7291
Other	428	197	0	477	1	14	240	0	1357

Total wildlife	2850	964	1	8312	136	160	1672	0	14095
Last year's total	3240	1179	0	7402	319	210	1594	6	13950
Percent change ³	-12.04%	-18.24%	100%	12.29%	-57.37%	-23.81%	4.89%	-100%	1.04%
Other animals									
Reclaimed	47	36	0	86	18	28	25	5	245
Rehomed	384	609	8	758	296	184	482	97	2818
Currently in Care ¹	70	19	0	67	25	15	107	19	322
Transferred ²	0	20	0	144	53	4	8	0	229
Euthanased	191	1284	4	328	228	29	470	40	2574
Other	26	36	1	88	41	8	62	2	264
Total other animals	718	2004	13	1471	661	268	1154	163	6452
Last year's total	576	2168	17	1747	679	372	1717	38	7314
Percent change ³	24.7%	-7.6%	-23.5%	-15.8%	-2.7%	-28.0%	-32.8%	328.9%	-11.8%

Total animals received	7909	32630	1363	42389	9046	5315	30471	2402	131525
Total 2010-11	8563	46339	1395	45933	10769	5713	35607	2775	157094
Percent change ⁴	-7.64%	-29.58%	-2.29%	-7.72%	-16.00%	-6.97%	-14.42%	-13.44%	-16.28%

¹Currently in Care: animals remaining in shelter at end of financial year including foster care

²Transferred: animals transferred to non-RSPCA shelter or pound

^{3,4}Percentage change in 2011-12 from previous year's figures

[^]NSW previously included Council animals, this year Council animals are not included

Footnote to Table 4: Examples of livestock, wildlife and other animals received

Livestock

- Cattle
- Chickens
- Ducks
- Geese
- Goats
- Bantam Hens
- Pigs
- Roosters
- Sheep
- Donkey
- Turkey

Wildlife

- A wide variety of native birds
- Magpies
- Galahs
- Lizards
- Possums
- Kookaburras
- Water birds
- Turtles
- Koalas
- Kangaroos and Wallabies

Other animals

- Budgerigars
- Doves
- Ferrets
- Guinea pigs
- Mice
- Pigeons
- Rabbits
- Rats
- Tame ducks and chickens

Table 5: Cruelty complaints and prosecutions by State/Territory RSPCA

	State/Territory RSPCA*							Total
	ACT	NSW	QLD	SA	TAS	VIC	WA	
Cruelty complaints								
Investigated	1437	14445	15099	2257	4168	10891	3664	51,961
Cruelty prosecutions								
Prosecutions finalised	2	64	30	38	45	77	10	266
Successful prosecutions ^{^^}	2	64	30	36	38	77	10	257
Convictions recorded	4	60	5	147	34	37	11	298
Charges laid	4	385	50	150	135	244	14	982
People charged	2	98	38	45	58	76	12	329
Cases pending	1	34	4	24	23	33	11	130
Routine inspections	0	78	12	48	151	19	19	327

* No inspectorate in NT

^{^^} Facts proved in relation to principal charges

Footnote to Table 5: Routine Inspection Details

Following are examples of the types of establishments routinely inspected by the RSPCA:

- Abattoirs
- Aquariums
- Breeding establishments
- Circuses
- Feedlots
- Guard dog firm
- Hobby farm
- Intensive farms
- Kennels
- Livestock vessels
- Markets
- Pet shops
- Poultry farms
- Pounds
- Riding schools
- Rodeos
- Saleyards
- Scientific establishments
- Shelters
- Shows
- Tourist parks
- Zoo

Table 6: National complaints, prosecutions and convictions over the past 5 years

	2006-07	2007-08	2008-09	2009-10	2010-11	2011-12
Complaints	41,915	49,494	50,765	53,544	59,916	51,961
Prosecutions	352	266	259	247	275	266
Convictions	236	253	202	185	208	298

Figure 3: Total RSPCA cruelty prosecutions by type of animal in 2011-2012

