



For all creatures great and small.

RSPCA Australia National Statistics 2007-2008

The RSPCA receives thousands of animals every year in every State and Territory in Australia. Annual statistics on the numbers of animals received, reclaimed or rehomed are compiled on a national basis by RSPCA Australia. The following statistics cover the 2007 to 2008 financial year and give details on the receipt and placement of animals by each state and territory RSPCA during that period. The statistics also include the number of cruelty complaints received by the RSPCA inspectorate and prosecutions undertaken.

Detailed information is provided in the following figures and tables:

Table 1 Animals received nationally by the RSPCA for the 2007-2008 financial year

Table 2 Comparison of animals received over the past 5 years

Table 3 Reasons for euthanasia of dogs and cats by each state and territory RSPCA.

Table 4 Breakdown of animals received by each state and territory RSPCA.

Table 5 Cruelty complaints and prosecutions by state/territory RSPCA

Table 6 National complaints, prosecutions and convictions over the past 5 years

Figure 1 Total numbers of animals received since 2000

Figure 2 Reasons for euthanasia of dogs and cats at RSPCA shelters in 2007-2008

Figure 3 Cruelty prosecutions by type of animal

Table 1: Animals received nationally by the RSPCA for the 2007-2008 financial year

	Number of animals	Percentage of total
Total animals received: 161,994		
Dogs		
Reclaimed	22,161	31.4% of total dogs
Rehomed	19,276	27.3% of total dogs
In Stock	2,511	3.6% of total dogs
Transferred	1,470	2.1% of total dogs
Euthanased	23,772	33.7% of total dogs
Other*	1,324	1.9% of total dogs
Total dogs	70,514	43.53% of total animals
Cats		
Reclaimed	2,455	3.6% of total cats
Rehomed	19,653	28.5% of total cats
In Stock	2,179	3.2% of total cats
Transferred	1,247	1.8% of total cats
Euthanased	42,731	61.9% of total cats
Other*	769	1.1% of total cats
Total cats	69,034	42.62% of total animals
Other animals[#]		
Reclaimed	2,572	11.5% of other animals
Rehomed	3,620	16.1% of other animals
In Stock	570	2.5% of other animals
Transferred	1,617	7.2% of other animals
Euthanased	11,015	49.1% of other animals
Other*	3,052	13.6% of other animals
Total other animals	22,446	13.86% of total animals

*Including: dead on arrival, escaped, foster care or not specified

[#]Including: horses, small animals, livestock, and wildlife

Table 2: Comparison of animals received over the past 5 years

	2003-04	2004-05	2005-06	2006-07	2007-08	Change from previous year
Dogs						
Reclaimed/rehomed/other	36,415	39,372	44,790	45,730	46,742	Up 2.21%
Euthanased	22,169	20,658	21,554	21,973	23,772	Up 8.19%
Total dogs	58,594	60,030	66,344	67,703	70,514	Up 4.15%
Cats						
Reclaimed/rehomed/other	20,192	23,350	24,173	25,137	26,303	Up 4.64%
Euthanased	35,934	31,941	37,010	33,343	42,731	Up 28.16%
Total cats	56,126	55,291	61,183	58,480	69,034	Up 18.05%
Others						
Reclaimed/rehomed/other	8,583	8,105	9,768	9,149	11,431	Up 24.94%
Euthanased	11,887	8,733	9,626	9,089	11,015	Up 21.19%
Total others	20,470	16,838	19,394	18,238	22,446	Up 23.07%
Total animals	135,180	132,159	146,921	144,421	161,994	Up 12.17%

Figure 1: Animals received since 2000

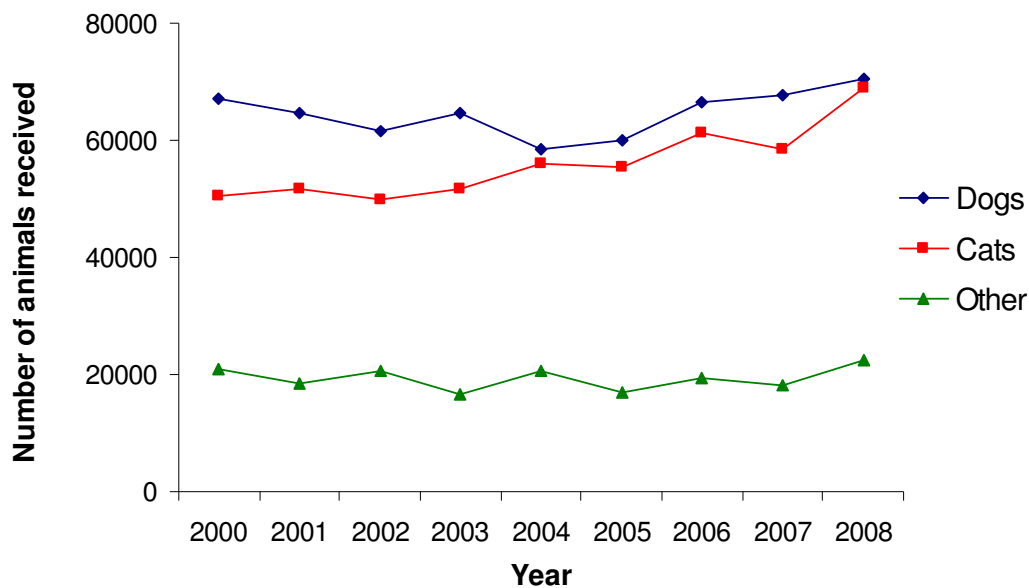


Table 3: Reasons for euthanasia of dogs and cats by each state and territory RSPCA

	ACT	NSW	QLD	SA [#]	TAS	VIC	WA	TOTAL
Dogs								
Medical reasons	46	3,009	2,836	220	119	1,853	57	8,140
Behavioural problems	61	4,229	4,093	639	389	2,192	100	11,703
No room for adoption	0	656	33	4	4	225	0	922
Other	0	1,844	0	394	21	149	0	2,408
Total dogs euthanased	107	9,738	6,962	1,350	533	4,419	157	23,772[^]
Cats								
Medical reasons	506	7,628	4,381	55	453	5,255	51	18,329
Behavioural problems	322	1,185	1,723	518	272	1,624	19	5,663
No room for adoption	0	1,322	3,310	70	189	1,365	0	6,256
Feral cat	527	1,357	1,829	248	250	2,256	1	6,468
Other	0	1,775	0	1,832	17	67	0	3,691
Total cats euthanased	1,355	13,267	11,243	4,252	1,181	10,567	71	42,731[^]

* Data not available for NT

[#] Figures only relate to animals euthanased at certain shelters across the state

[^] Including total animals euthanased in NT

Figure 2: Reasons for euthanasia of dogs and cats at RSPCA shelters in 2007-2008

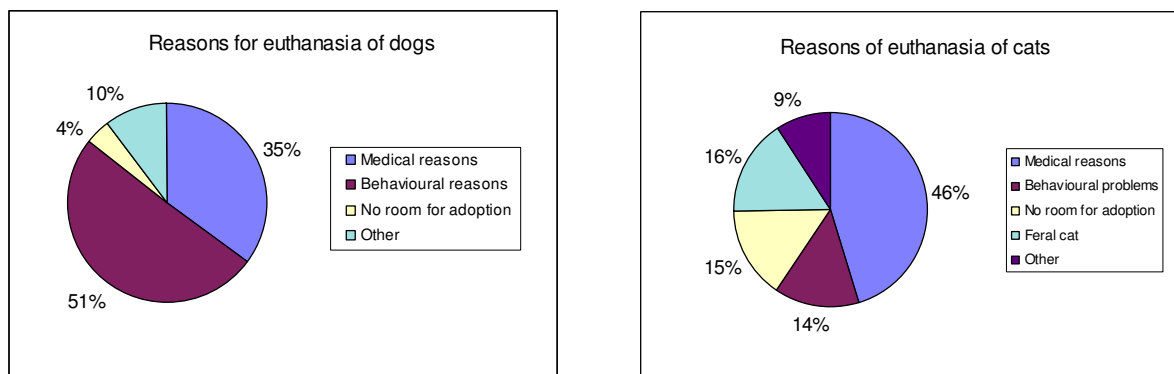


Table 4: Breakdown of animals received by each State and Territory RSPCA

	State/Territory RSPCA								
	ACT	NSW	NT*	QLD	SA	TAS	VIC	WA	Total
Dogs									
Reclaimed	661	4,825	147	4,150	2,187	582	9,018	591	22,161
Rehomed	597	5,619	593	5,152	1,066	329	4,893	1,027	19,276
In stock ¹	55	1,059	39	688	106	35	458	71	2,511
Transferred ²	123	718	0	2	561	66	0	0	1,470
Euthanased	107	9,738	506	6,962	1,350	533	4,419	157	23,772
Other ³	3	717	2	303	0	0	299	0	1,324
Total	1,546	22,676	1,287	17,257	5,270	1,545	19,087	1,846	70,514
Last year's total	1,406	21,807	1,287	17,456	4,559	2,076	17,333	1,779	67,703
Percent change ⁴	+9.96%	+3.98%	n/a	-1.14%	+15.60%	-25.58%	+10.12%	+3.77%	+4.15%
Cats									
Reclaimed	154	478	11	654	231	54	873	0	2,455
Rehomed	1,292	4,874	344	5,051	1,486	717	5,268	621	19,653
In stock	75	808	49	747	107	48	303	42	2,179
Transferred	0	373	0	1	155	112	606	0	1,247
Euthanased	1,355	13,267	795	11,243	4,252	1,181	10,567	71	42,731
Other	33	71	18	394	0	0	253	0	769
Total	2,909	19,871	1,217	18,090	6,231	2,112	17,870	734	69,034
Last year's total	2,538	15,867	1,217	17,093	4,564	2,830	13,573	798	58,480
Percent change ⁴	+14.62%	+25.23%	n/a	+5.83%	+36.52%	-25.37%	+31.66%	-8.02%	+18.05%
Horses									
Reclaimed	0	12	0	13	0	2	19	0	46
Rehomed	0	38	0	16	1	7	8	8	78
In stock	0	6	0	15	0	7	18	1	47
Transferred	0	0	0	0	0	0	0	0	0
Euthanased	0	2	0	8	5	3	7	0	25
Other	0	0	0	0	0	0	0	0	0
Total	0	58	0	52	6	19	52	9	196
Last year's total	6	68	0	37	7	16	39	0	173
Percent change ⁴	-100%	-14.71%	n/a	+40.54%	-14.29%	+18.75%	+33.33%	+100%	+13.29%
Livestock									
Reclaimed	4	33	0	35	4	9	25	0	110
Rehomed	56	240	8	654	64	72	232	44	1,370
In stock	2	72	2	15	1	6	38	2	138
Transferred	0	0	0	0	0	2	0	0	2
Euthanased	6	306	1	375	28	20	130	2	868
Other	2	44	3	74	0	0	11	0	134
Total	70	695	14	1153	97	109	436	48	2,622
Last year's total	86	780	14	942	75	139	446	22	2,504
Percent change ⁴	-18.6%	-10.9%	n/a	+22.40%	+29.33%	-21.58%	-2.24%	+118.2%	+4.71%

Wildlife									
Released	824	46	0	1014	253	16	41	0	2,194
In stock	58	16	0	80	0	0	31	0	185
Transferred	22	435	0	0	257	135	714	0	1,563
Euthanased	1,366	496	0	2,860	731	83	1,214	0	6,750
Other	1,515	358	0	573	2	0	279	0	2,727
Total	3,785	1,351	0	4,527	1,243	234	2,279	0	13,419
Last year's total	2,648	805	0	4,213	336	298	2,590	0	10,890
Percent change ⁴	+42.94%	+67.83%	n/a	+7.45%	+269.9%	-21.48%	-12.01%	n/a	+23.22%
Other animals									
Reclaimed	19	59	0	75	19	5	45	0	222
Rehomed	319	320	9	1,025	179	56	243	21	2,172
In stock	24	65	0	40	6	6	59	0	200
Transferred	0	1	0	1	8	0	42	0	52
Euthanased	222	1,411	1	367	151	33	1,181	6	3,372
Other	18	51	2	58	0	0	62	0	191
Total	602	1,907	12	1,566	363	100	1,632	27	6,209
Last year's total	509	1,528	12	1,193	362	85	956	26	4,671
Percent change ⁴	+18.3%	+24.8%	n/a	+31.3%	0.3%	+17.6%	+70.7%	+3.8%	+32.9%
Total animals received	8,912	46,558	2,530	42,645	13,210	4,119	41,356	2,664	161,994
Total 2006-07	7,193	40,855	2,530	40,934	9,903	5,444	34,937	2,625	144,421
Percent change ⁴	+23.9%	+13.96%	n/a	+4.18%	+33.39%	-24.34%	+18.37%	+1.49%	+12.17%

* No current data available for NT – figures used for NT are the 2006-07 statistics from Darwin Regional Branch only, therefore percent changes are not applicable

¹In stock: animals remaining in shelter at end of financial year

²Transferred: animals transferred to non-RSPCA shelter or pound

³Other: includes animals dead on arrival, escaped, or none of the above categories

⁴ Percentage change in 2007-08 from previous year's figures

Footnote to Table 4: Examples of livestock, wildlife and other animals received

Livestock

- Cattle
- Chickens
- Ducks
- Geese
- Goats
- Bantam Hens
- Pigs
- Roosters
- Sheep

Wildlife

- A wide variety of native birds
- Magpies
- Galahs
- Lizards
- Possums
- Kookaburras
- Water birds
- Turtles
- Koalas
- Kangaroos and Wallabies

Other animals

- Budgerigars
- Doves
- Ferrets
- Guinea pigs
- Mice
- Pigeons
- Rabbits
- Rats
- Tame ducks and chickens

Table 5: Cruelty complaints and prosecutions by State/Territory RSPCA

	State/Territory RSPCA*							Total
	ACT	NSW	QLD	SA	TAS	VIC^	WA	
Cruelty complaints								
Investigated	854	13,649	11,034	3,183	4,150	13,507	3,117	49,494
Cruelty prosecutions								
Prosecutions	1	131	51	17	20	38	8	266
Convictions	1	120	50	17	13	38	14	253
Charges laid	1	835	75	0	0	390	8	1309
People charged	1	126	51	19	0	38	8	243
Cases examined	7	0	0	0	0	0	21	28
Cases pending	1	66	3	20	0	20	3	113
Routine inspections	0	50	361	35	40	46	43	575

* No inspectorate in NT

^ The increase in complaints investigated by RSPCA Victoria is due to change in way the statistics were collated

Data not available or included in overall total

Footnote to Table 5: Routine Inspection Details

Following are examples of the types of establishments routinely inspected by the RSPCA:

- Abattoirs
- Aquariums
- Breeding establishments
- Circuses
- Feedlots
- Guard dog firm
- Hobby farm
- Intensive farms
- Kennels
- Livestock vessels
- Markets
- Pet shops
- Poultry farms
- Pounds
- Riding schools
- Rodeos
- Saleyards
- Scientific establishments
- Shelters
- Shows
- Tourist parks
- Zoo

Table 6: National complaints, prosecutions and convictions over the past 5 years

	2002-03	2003-04	2004-05	2005-06	2006-07	2007-08
Complaints	41,150	42,452	42,335	38,913	41,915	49,494
Prosecutions	330	320	328	377	352	266
Convictions	138	155	251	254	236	253

Figure 3: Total RSPCA cruelty prosecutions by type of animal in 2007-2008

